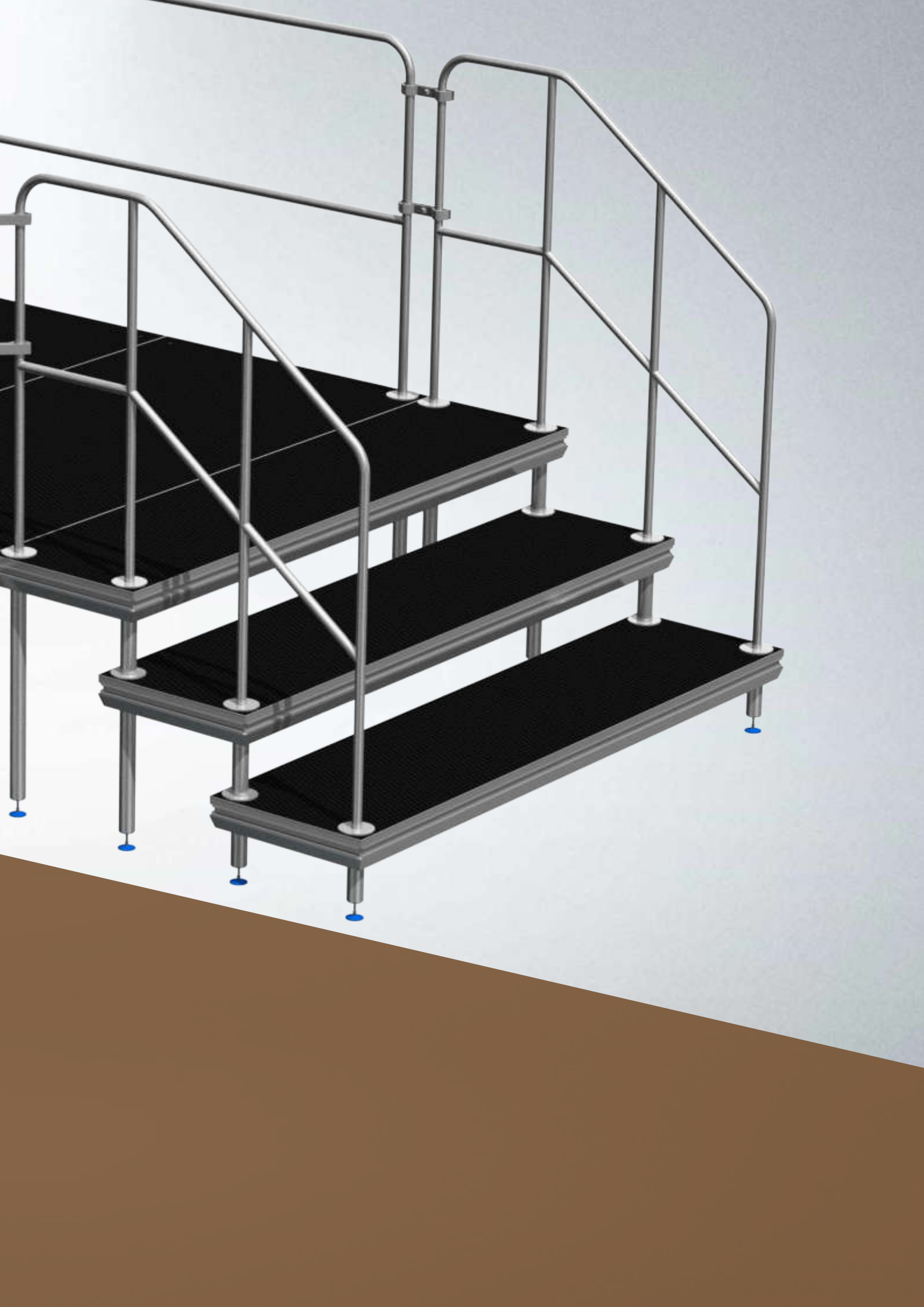
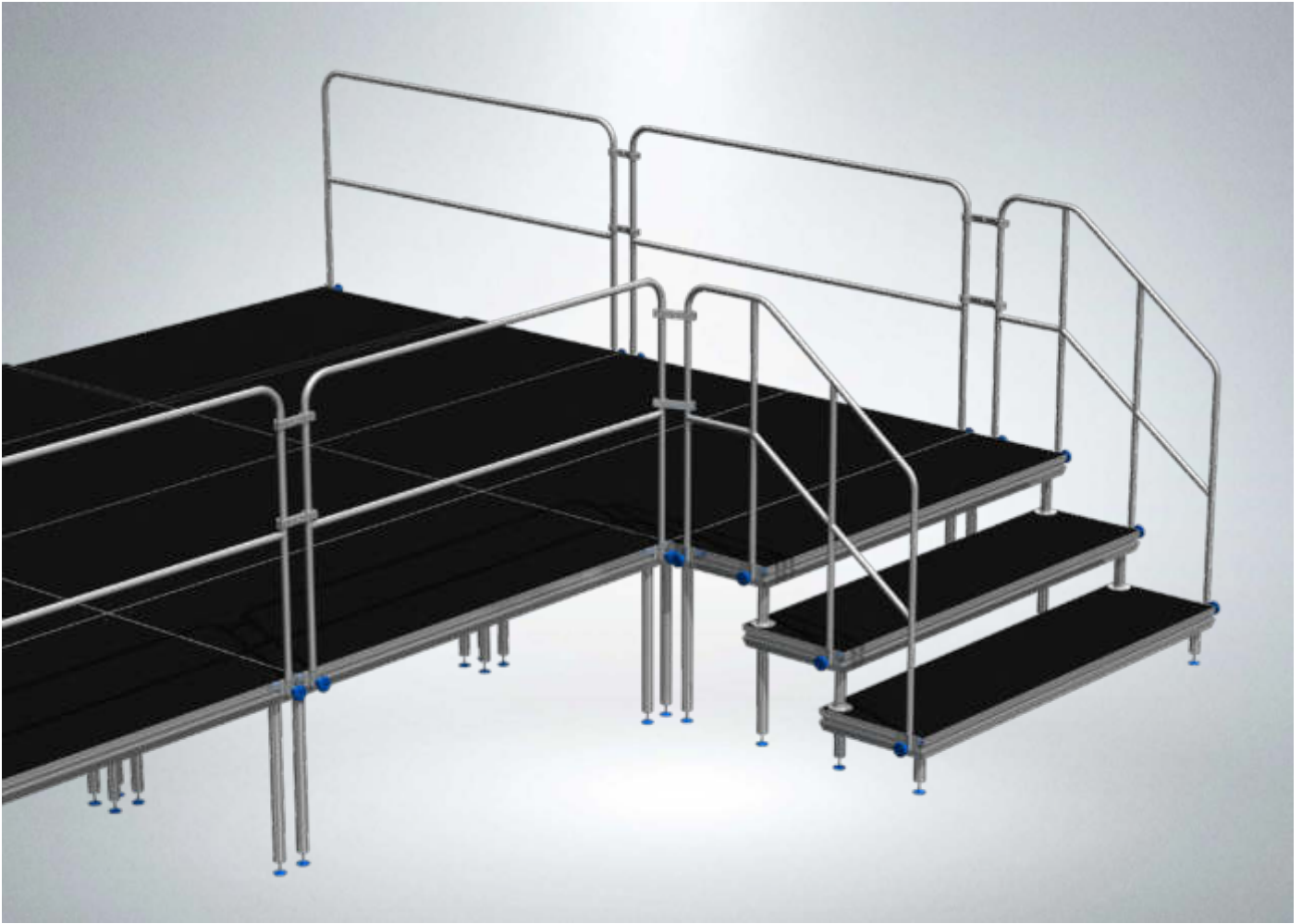


Handrailing





Handrails outside the stage

Available on our decking system are the handrails that are mounted on the outside of the stage, with included connectors (knobs) to connect the handrails to the profile that is made in the side of the deck system. This profile is also used for the self-leveling inserts, assembly inserts and other accessories like the kick toe boards and skirting profiles.

We offer three types of hand rails to mount on the side of the stage: standard aluminum handrails and the same hand rail but with a polycarbonate transparent screen and heavy duty handrails (also known as child safe) which offers more stability and more strength at side impact.

Note: A combination of outside handrails, kick toe boards and or skirting profiles is not possible, as these accessories all need a clear groove in the profile. If you would like to use both kick toe boards or skirting profiles together with hand rails we would like to refer you to the up following pages about hand rails that can be mounted on top of the stage (inside rails)

Handrailing outside the stage

Standard Handrailing (mount on outside deck)

We offer aluminum handrails that can be used with all standard sizes of decks in metric 200cm and 100cm as well as in imperial 8ft and 4ft. The handrails are very durable and at the same time very light. The additional bar is a protection against sliding for example flight cases. All handrails are powder coated black.



Standard Handrailing

Productcode	Length	Height
ED-SHRO-L200	200 cm.	120 cm.
ED-SHRO-L100	100 cm.	120 cm.
ED-SHRO-L8FT	8 ft.	4 ft.
ED-SHRO-L4FT	4 ft.	4 ft.

**All handrailings are delivered with connectors for deck connection*



Standard Handrailing with Plexiglas

Productcode	Length	Height
ED-SHRO-L200-TR	200 cm.	120 cm.
ED-SHRO-L100-TR	100 cm.	120 cm.
D-SHRO-L8FT-TR	8 ft.	4 ft.
ED-SHRO-L4FT-TR	4 ft.	4 ft.

**All handrailings are delivered with connectors for deck connection*

Heavy Duty Handrailing (mount on outside deck)

Next, to the standard handrails we offer a Heavy Duty handrail, this handrail is child safe and offers more stability and more strength than the standard handrail. All handrails are powder coated black.



Heavy Duty Handrailing

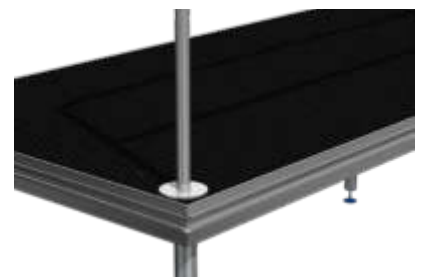
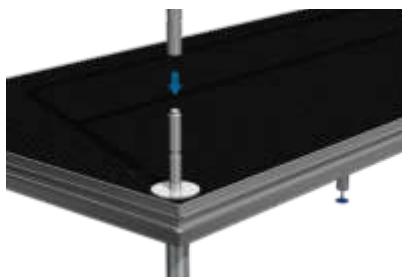
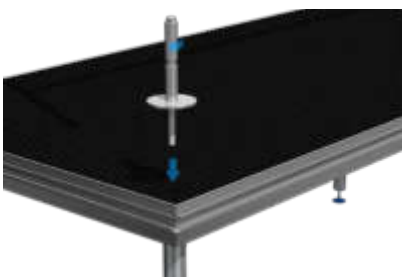
Productcode	Length	Height
ED-SHRO-L200-HD	200 cm.	120 cm.
ED-SHRO-L100-HD	100 cm.	120 cm.
ED-SHRO-L8FT-HD	8 ft.	4 ft.
ED-SHRO-L4FT-HD	4 ft.	4 ft.

**All handrailings are delivered with connectors for deck connection*



Inside Handrails mounted on the stage

New is the feature that the standard handrails can be mounted inside (on top of the stage). It gives it a very professional look and feel when it comes to building stages and as the profile on the side on the deck is not used for this type of handrails, it gives you the possibility to mount other accessories on the side of the deck such as kick toe boards or skirting profiles.



To mount the handrails on top of the stage a special adaptor is needed. This adaptor is mounted through the deck in the corner side where the little dot (cap) can be removed. As the dot is removed the adaptor fits in a special leg which offers the needed support for the adaptor to hold the handrails. The handrail just can be put on the pivot holder.

Handrailing inside the stage

Standard Handrailing (mount in the deck)

We offer aluminum handrails that can be used with all standard sizes of decks in metric 200cm and 100cm as well as in imperial 8ft and 4ft. The handrails are very durable and at the same time very light. The additional bar is a protection against sliding for example flight cases. All handrails are powder coated black.



Standard Handrailing

Productcode	Length	Height
ED-SHRH200	200 cm.	120 cm.
ED-SHRH100	100 cm.	120 cm.
ED-SHRH8FT	8 ft.	4 ft.
ED-SHRH4FT	4 ft.	4 ft.

**All handrailings are delivered with connectors for deck connection*



Standard Handrailing with Plexiglas

Productcode	Length	Height
ED-SHRH200-TR	200 cm.	120 cm.
ED-SHRH100-TR	100 cm.	120 cm.
ED-SHRH8FT-TR	8 ft.	4 ft.
ED-SHRH4FT-TR	4 ft.	4 ft.

**All handrailings are delivered with connectors for deck connection*

Adaptor for linking handrailing inside the stage

To mount the handrails on top of the deck system a special adaptor is needed. This adapter fits on top of the deck after removing the little dot (cap). The handrail should be put on the pivot holder.



Adaptor for linking handrailing inside the stage

Productcode	For use with
ED-SHRI-ADAPTOR	Adaptor for mounting on deck